

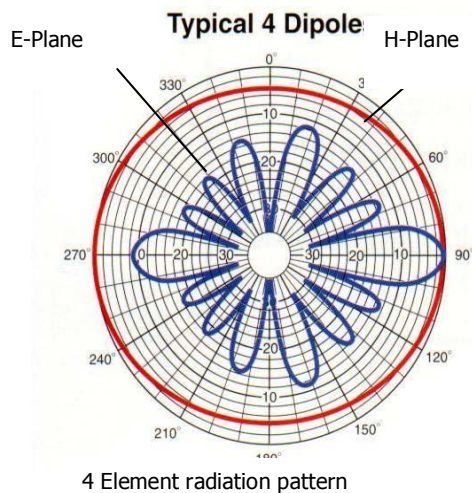
VHF BROADCAST BAND PHASED DIPOLE ARRAY ANTENNAS

ECOM FM Broadcast phased dipole array antenna offers a steerable radiation pattern ideal for wide area coverage required of demanding broadcast applications. The antenna is available in 2 pole, 4 pole or 8 pole dipole arrays providing gains ranging from 3dbd to 10 db in omni or semi directional radiation patterns.

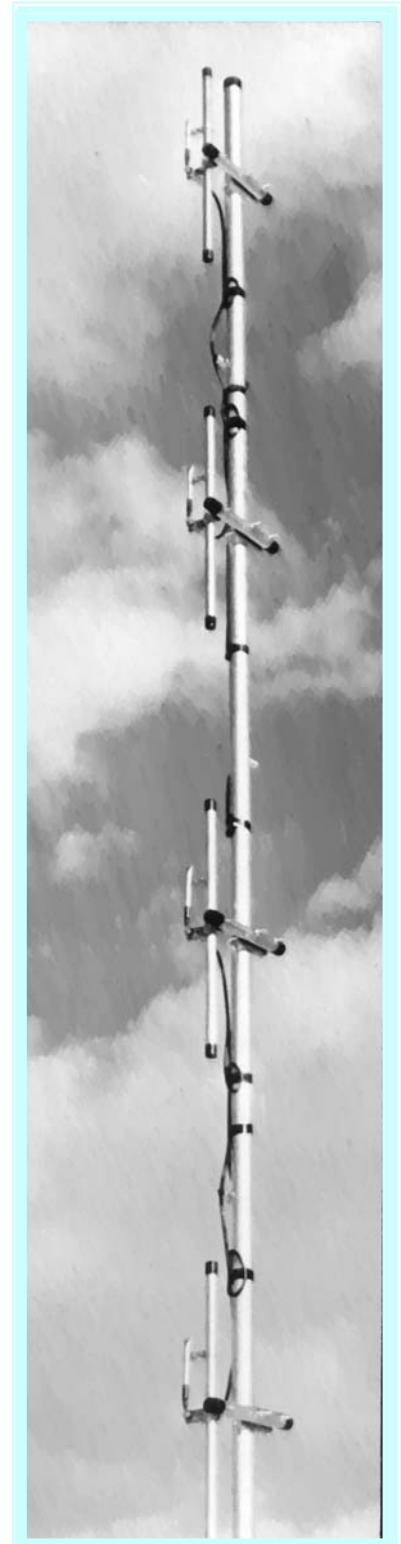
The antennas can be configured to provide steerable lobes radiating in directions of interest, but placing the dipoles in suitable manner around masts or towers. The antennas are shipped with a power divider to match the ordered array.

Two Element Dipole Array: provides a 3.4db elliptical bi-directional gain. The antenna is shipped with 2 dipoles and a 2 port power divider to feed the two antennas from a common cable connector. The antennas are installed on the opposite sides of a mast spaced vertically. For a uni-directional lobe the antennas are installed on the same side of the mast.

Four Element Dipole Array: provides a 6db omni directional or a 9db lobed gain. The antenna is shipped with 4 dipoles and a power divider to feed the four antennas from a common cable connector. The four antennas are installed around the mast at 90 degree angular separation spaced vertically. For lobed radiation pattern the antennas are placed on the same side of the mast spaced vertically.



Eight Element Dipole Array: For higher gain applications two sets of four element dipole arrays can be configured together into an eight-element array to provide 8 db omni-directional or 11 db lobed gain. The antenna is shipped as two sets of 4 element antennas comprising 8 dipoles and power dividers to feed the eight antennas from a common cable connector. The eight antennas are installed in pairs of two antennae at 90 degree angular separation from each other around the mast spaced vertically.



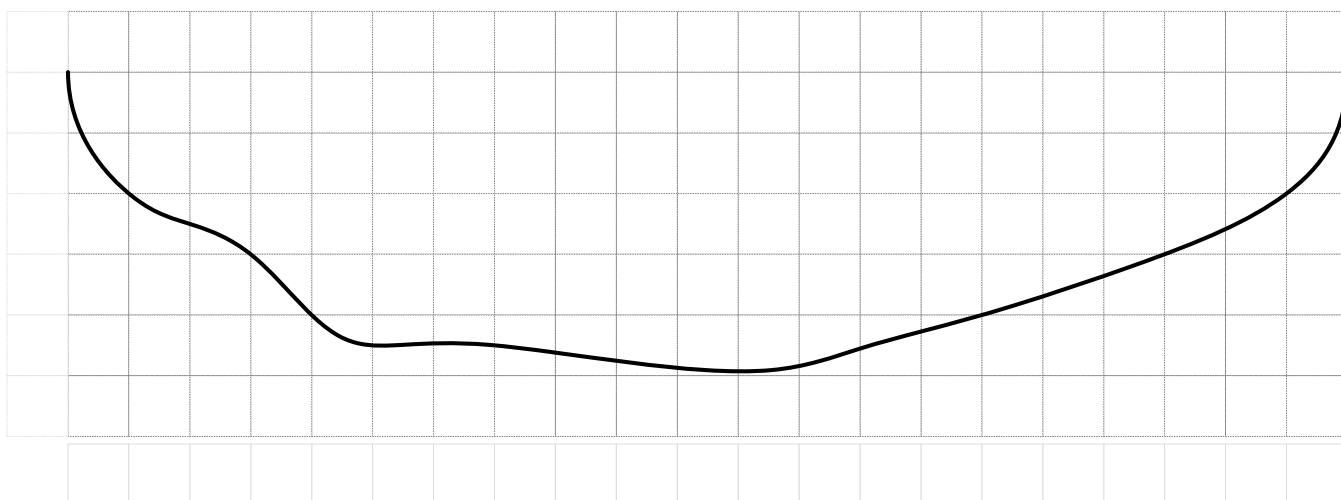
ECOM

EDA-100

**BROADCAST BAND
PHASED DIPOLE ARRAY**

SPECIFICATIONS

Model	EDA-100-2	EDA-100-4	EDA-100-8
No of Dipoles	2	4	8
Freq Range	88 ~ 108 MHz		
Bandwidth	12 MHz	20 MHz	
Required Space on Tower	16 ft	32 ft	32 ft
Wind Surface	2.5 sq ft	6.2 sq ft	12.0 sq ft
Weight	3.8 Kgs	8.2 Kgs	16.2 Kgs
Gain (db)	3.4 db	6 db	8 db
Omni pattern		9 db	10 db
Elliptical pattern			
Radiation Pattern	Elliptical	Omni or Elliptical	Omni or Elliptical
Polarization	Vertical or Horizontal		
Impedance	50 Ohms Nominal		
VSWR	< 1.7		
Power Handling	1200 Watts		
Wind Survival	160 Kph		
Lighting Protection	DC Protection		
Material	Coated Aluminum - Galvanized steel U-bolts		
Termination	N-Type		
PARTS LIST			
Dipoles	2	4	8
Power Divider	2 port	4 port	2 port + 4 port
U Bolts	2	4	8
Rubber Caps 2.0"	4	8	16
Rubber Caps 1.0"	8	16	32



East West Infiniti (Pvt.) Ltd has a 20 year history in Radio and Communication Systems; amongst other products, it manufactures a wide range of radio communication antennas.

Specifications subject to change without notice of obligation.



EAST WEST INFINITI (PVT) LTD

146 Industrial Triangle, Kahuta Road, Islamabad 44000, PAKISTAN

Tele: +92-51-111-222-101 Fax: +51-449-1845 info@eastwestin.com www.eastwestin.com